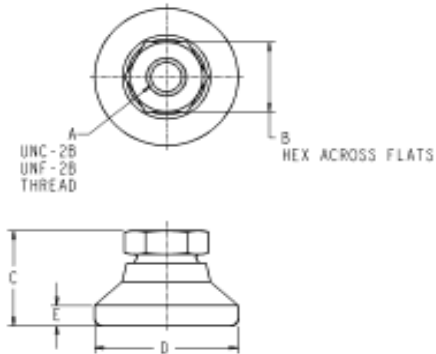


LEVELING DEVICES- Low Cost High Value Socket Style Without Pad

Low Cost High Value Levelers are available in both stud styles and socket styles, with or without elastomer pad.

Vlier HI-VALUE Socket Style Steel and Stainless Steel Leveling Devices swivel 15° off the centerline to adjust to uneven surfaces and level machine tools, electronic racks, benches, etc. For applications with an existing stud installation. Zinc plate with gold chromate finish is standard add '3' to end of part number for new Steel Nickel Chromate finish.



| Part No. | Max load (lbs) | A Thread | B Hex | C Height to Hex | D Pad Diameter | E |
|----------------|----------------|----------|--------|-----------------|----------------|-------|
| HVP298B | 700 | 10-32 | 3/8 | 17/32 | 3/4 | 7/64 |
| HVP300B | 1,100 | 1/4-20 | 1/2 | 45/64 | 1 | 5/32 |
| HVP304B | 3,750 | 3/8-16 | 5/8 | 7/8 | 1-1/4 | 3/16 |
| HVP306B | 5,000 | 1/2-13 | 3/4 | 1-1/8 | 1-7/8 | 1/4 |
| HVP308B | 6,000 | 5/8-11 | 7/8 | 1-1/4 | 2-1/2 | 5/16 |
| HVP310B | 7,200 | 3/4-10 | 1-1/16 | 1-1/2 | 3 | 1/2 |
| HVP312B | 22,000 | 1-8 | 1-3/8 | 1-7/8 | 4 | 13/32 |

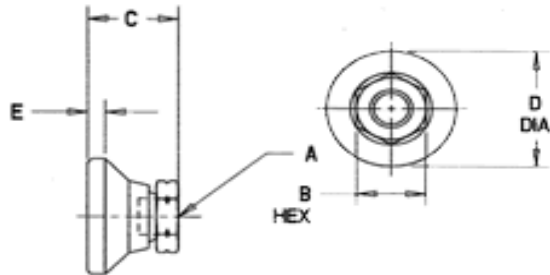
| | Max load (lbs) | A Thread | B Hex | C Height to Hex | D Pad Diameter | E |
|---------------------------|--------------------------|-----------------|--------------|---------------------------|--------------------------|-------|
| Steel Nickel Finish | | | | | | |
| HVP298B3 | 700 | 10-32 | 3/8 | 17/32 | 3/4 | 7/64 |
| HVP300B3 | 1,100 | 1/4-20 | 1/2 | 45/64 | 1 | 5/32 |
| HVP304B3 | 3,750 | 3/8-16 | 5/8 | 7/8 | 1-1/4 | 3/16 |
| HVP306B3 | 5,000 | 1/2-13 | 3/4 | 1-1/8 | 1-7/8 | 1/4 |
| HVP308B3 | 6,000 | 5/8-11 | 7/8 | 1-1/4 | 2-1/2 | 5/16 |
| HVP310B3 | 7,200 | 3/4-10 | 1-1/16 | 1-1/2 | 3 | 1/2 |
| HVP312B3 | 22,000 | 1-8 | 1-3/8 | 1-7/8 | 4 | 13/32 |

| | Max load (lbs) | A Thread | B Hex | C Height to Hex | D Pad Diameter | E |
|-----------------------------------|--------------------------|-----------------|--------------|---------------------------|--------------------------|-------|
| Stainless Steel/ Passivated | | | | | | |
| HVSSP298B | 700 | 10-32 | 3/8 | 17/32 | 3/4 | 7/64 |
| HVSSP300B | 1,100 | 1/4-20 | 1/2 | 45/64 | 1 | 5/32 |
| HVSSP304B | 3,750 | 3/8-16 | 5/8 | 7/8 | 1-1/4 | 3/16 |
| HVSSP306B | 5,000 | 1/2-13 | 3/4 | 1-1/8 | 1-7/8 | 1/4 |
| HVSSP308B | 6,000 | 5/8-11 | 7/8 | 1-1/4 | 2-1/2 | 5/16 |
| HVSSP310B | 7,200 | 3/4-10 | 1-1/16 | 1-1/2 | 3 | 1/2 |
| HVSSP312B | 22,000 | 1-8 | 1-3/8 | 1-7/8 | 4 | 13/32 |

Metric LEVELING DEVICES- Low Cost High Value Socket Style Without Pad

Low Cost High Value Levelers are available in both stud styles and socket styles, with or without elastomer pad.

Vlier HI-VALUE Socket Style Steel and Stainless Steel Leveling Devices swivel 15° off the centerline to adjust to uneven surfaces and level machine tools, electronic racks, benches, etc. For applications with an existing stud installation. Zinc plate with gold chromate finish is standard add '3' to end of part number for new Steel Nickel Chromate finish.



| Part No. | Max load KG (lbs) | A Thread | B Hex | C Height to Hex +/- .02) | D Dia. | E in | M Dia. |
|----------------|-------------------------|------------------------------------|----------|-----------------------------------|-----------|---------|-----------|
| Steel | | | | | | | |
| HVPM6B | 318 (700) | M6 x 1-6g .23 MIN FULL THD | 17 | 0.88 | 1.25 | 0.17 | 0.63 |
| HVPM8B | 500 (1100) | M8 x 1.25 X 6H .31 MIN FULL THD | 19 | 1.13 | 1.88 | 0.25 | 0.91 |
| HVPM10B | 1705 (3750) | M10 x 1.5-6g .44 MIN FULL THD | 17 | 0.88 | 1.25 | 0.17 | 1.12 |
| HVPM12B | 2273 (5000) | M12 x 1.75-6g .44 MIN FULL THD | 19 | 1.13 | 1.88 | 0.25 | 1.75 |
| HVPM16B | 2727 (6000) | M16 x 2.5-6g .44 MIN FULL THD | 24 | 1.25 | 2.5 | 0.31 | 2.37 |
| HVPM20B | 3273 (7200) | M20 x 2.5-6g .62 MIN FULL THD | 30 | 1.5 | 3 | 0.5 | 2.87 |
| HVPM24B | 9979 (22000) | M24 x 3-6g .81 MIN FULL THD | 30 | 1.5 | 3 | 0.5 | 3.87 |

| | Max load KG (lbs) | A Thread | B Hex | C Height to Hex +/- .02) | D Dia. | E in | M Dia. |
|----------------------------|--------------------------------------|------------------------------------|------------------|---|-------------------|-----------------|-------------------|
| Stainless Steel | | | | | | | |
| HVSSPM6B | 318 (700) | M6 x 1-6g .23 MIN FULL THD | 17 | 0.88 | 1.25 | 0.17 | 0.63 |
| HVSSPM8B | 500 (1100) | M8 x 1.25 X 6H .31 MIN FULL THD | 19 | 1.13 | 1.88 | 0.25 | 0.91 |
| HVSSPM10B | 1705 (3750) | M10 x 1.5-6g .44 MIN FULL THD | 17 | 0.88 | 1.25 | 0.17 | 1.12 |
| HVSSPM12 | 2273 (5000) | M12 x 1.75-6g .44 MIN FULL THD | 19 | 1.13 | 1.88 | 0.25 | 1.75 |
| HVSSPM16B | 2727 (6000) | M16 x 2.5-6g .44 MIN FULL THD | 24 | 1.25 | 2.5 | 0.31 | 2.37 |
| HVSSPM20B | 3273 (7200) | M20 x 2.5-6g .62 MIN FULL THD | 30 | 1.5 | 3 | 0.5 | 2.87 |
| HVSSPM24B | 9979 (22000) | M24 x 3-6g .81 MIN FULL THD | 30 | 1.5 | 3 | 0.5 | 3.87 |